

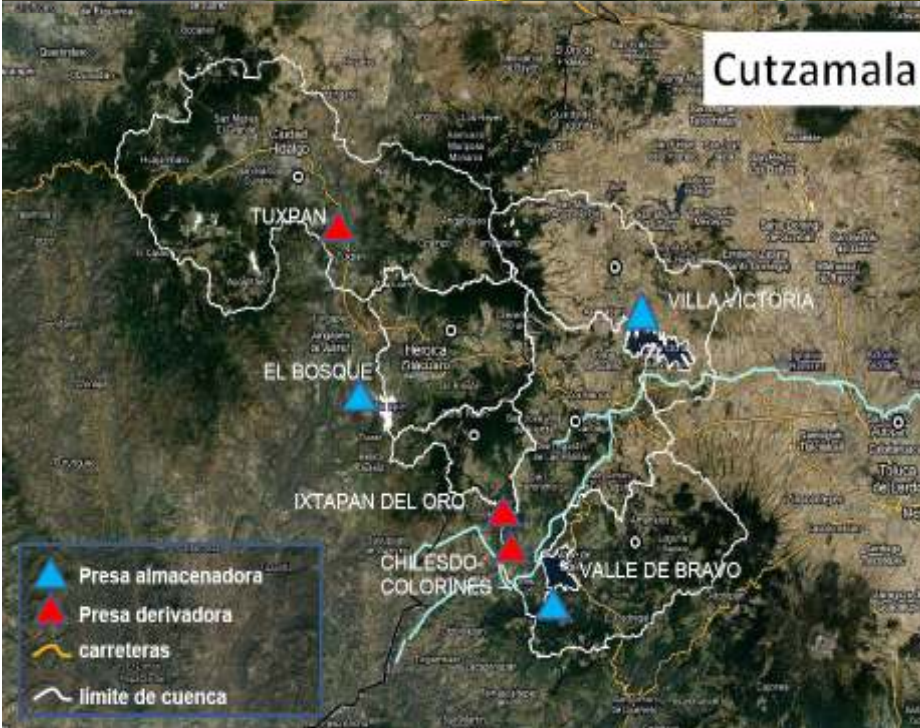


# REDD+ Partnership Meeting and Workshops

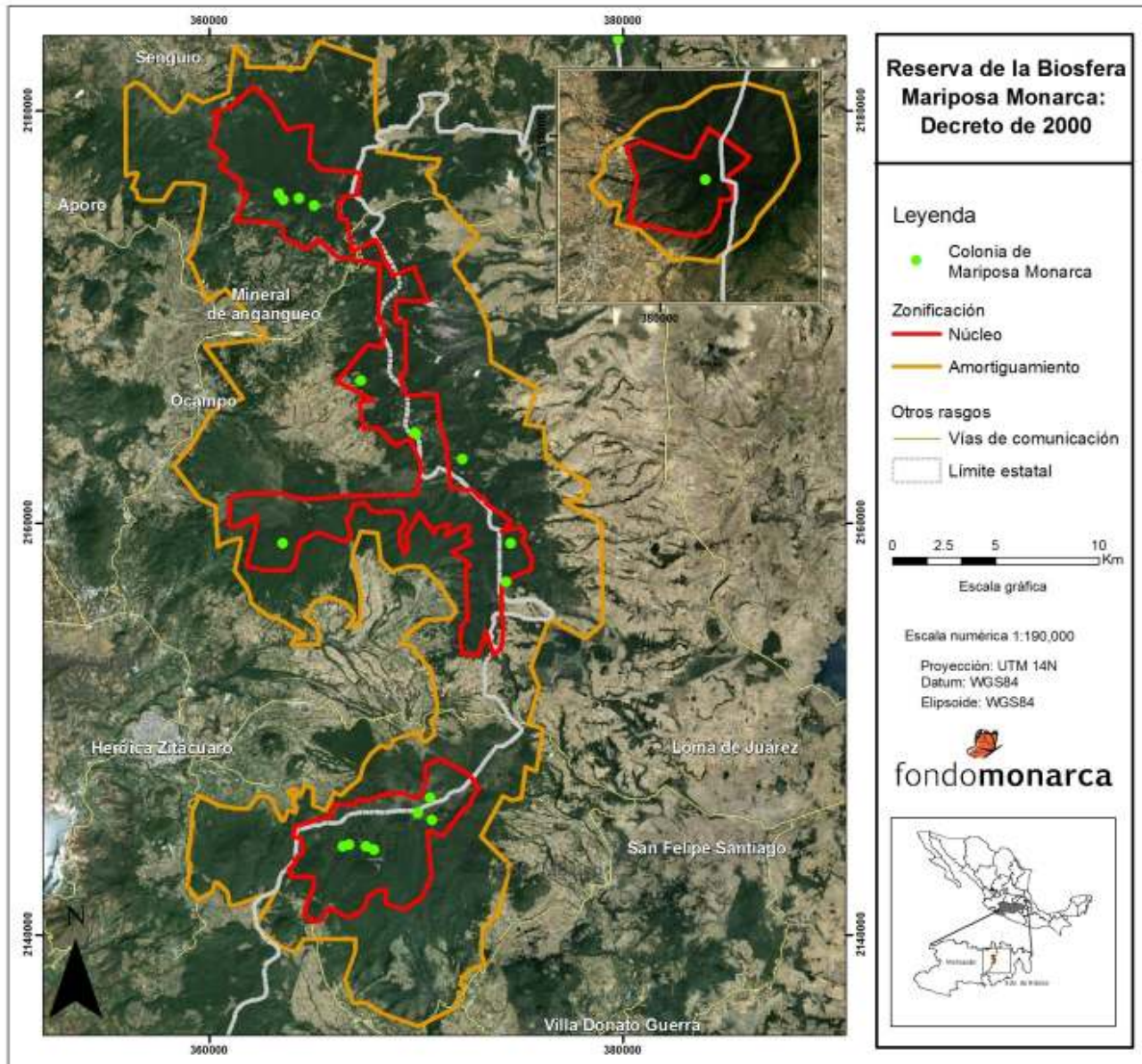
## Monarch Fund, México

Durban, South Africa, November 25 to 27, 2011.





# Monarch Butterfly Biosphere Reserve



**Ejidos, Indigenous Communities, and Private Property owners**

- 21 Ejidos
- 10 Indigenous Communities
- 3 Private Property

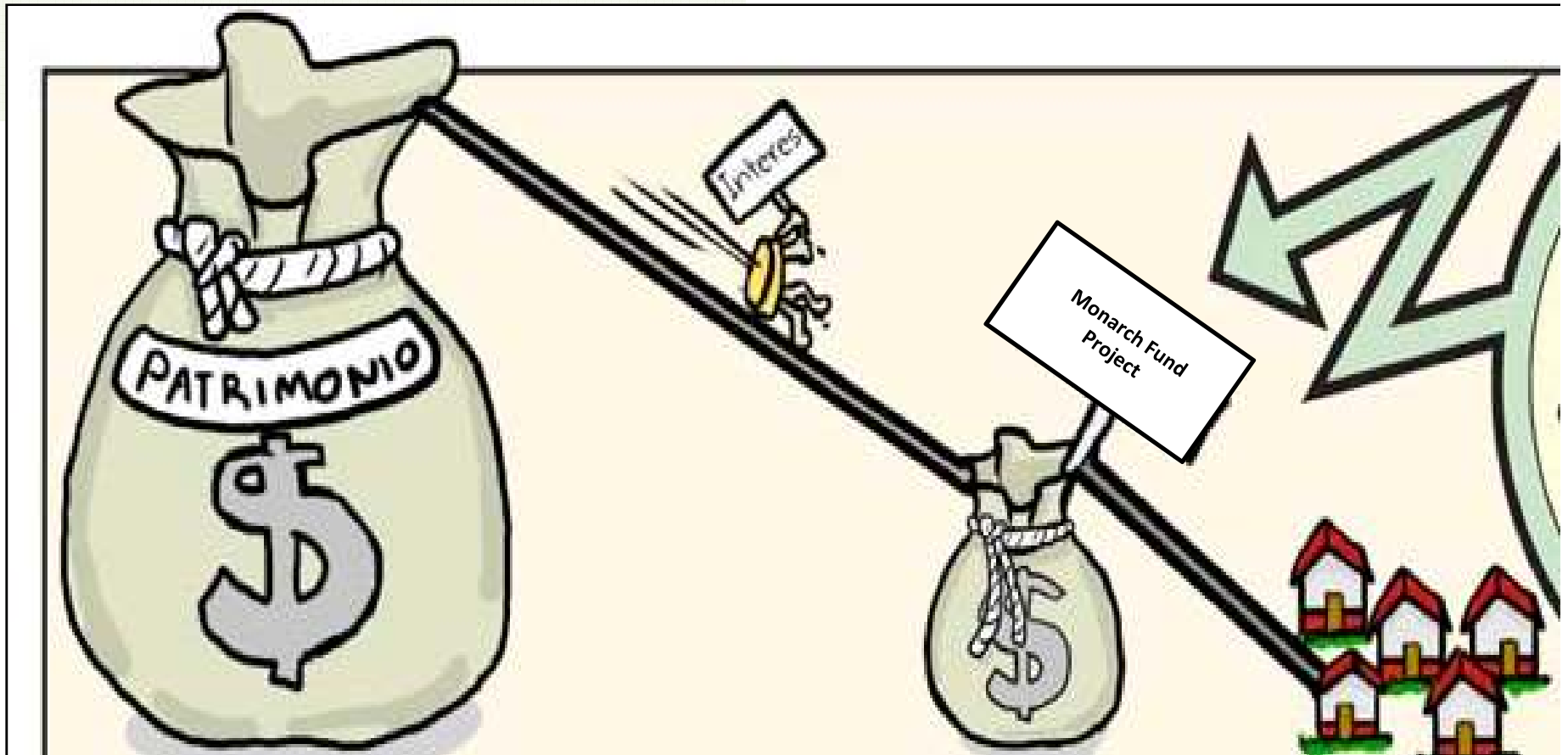


**11,347 hectare**



Fuente:  
Biocenosis A.C

# Strategy to promote the conservation of biodiversity and hydrological environmental services



FONDO MEXICANO  
PARA LA  
CONSERVACIÓN  
DE LA NATURALEZA, A.C.  
Institución Privada.

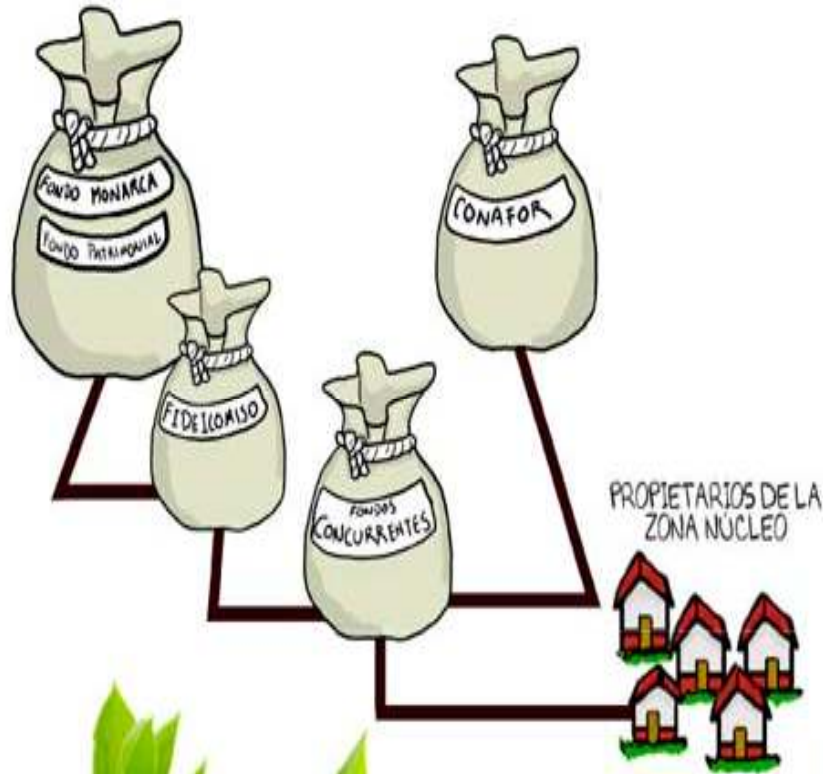
## 2. Monarch Fund - First phase (2000-2009)



### First phase of FM (2000 -2009)

1. Support *ejidos*, indigenous communities, and private property owners, whose forestry use permits in the core area have been modified, all of whom are offered \$18 USD per cubic meter of wood not harvested.
2. Payments to *ejidos*, indigenous communities, and private property owners (without usage permits) for conservation-related services. These stakeholders receive \$12 USD per hectare conserved. These payments are made in exchange for a commitment to conserve the core area and work in conjunction with the managing entity of the Monarch Butterfly Biosphere Reserve to ensure its protection.

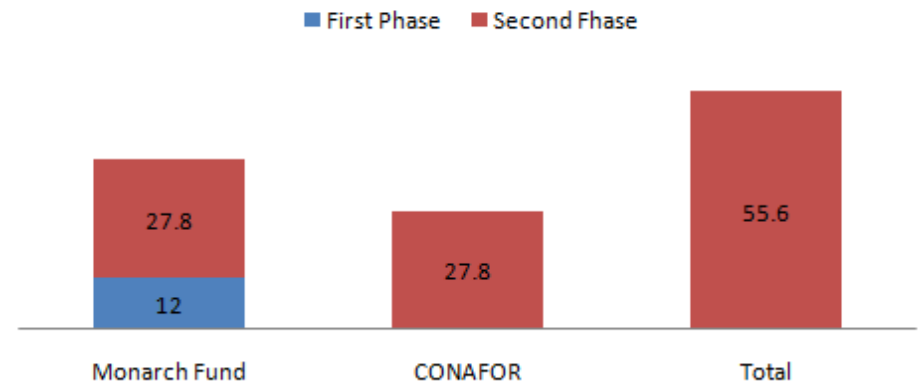
### 3. Conafor's participation - Second phase (2009-2018)



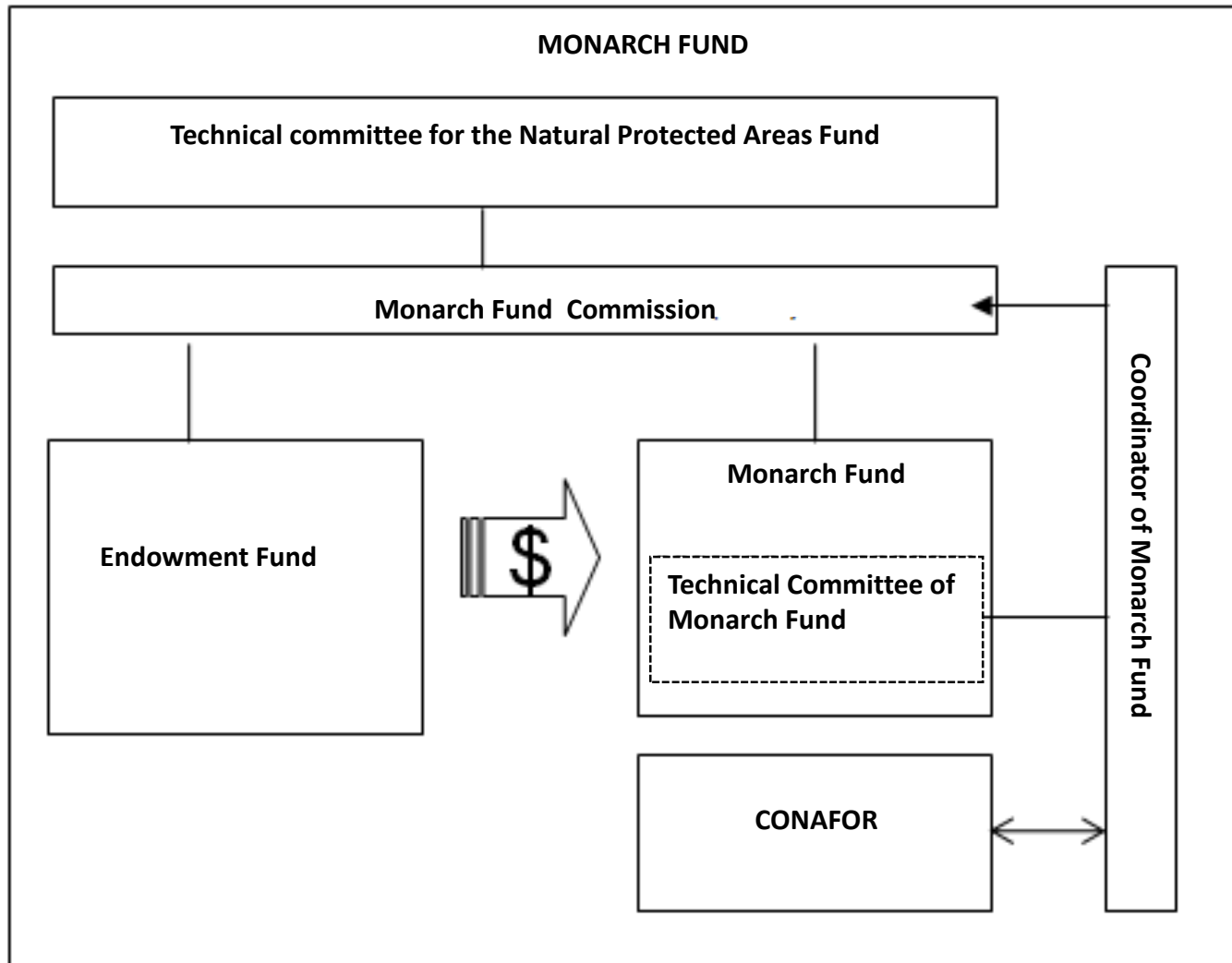
#### Second phase of FM (2009 -2018)

Conafor has promised to provide resources to the initiative's second phase (to be carried out from 2009 to 2018) in the form of matching funds. Together, the Monarch Fund and Conafor, have earmarked about 5 million USD for *direct* disbursement to 38 landowners in the core area over a 10-year period. For every dollar that Conafor contributes per hectare of preserved forest, the Monarch Fund contributes with 1.21 dollars.

**Matching Funds**  
**\$USD per hectare conserved**



# Multi-sector technical committee



## 4. Forest monitoring



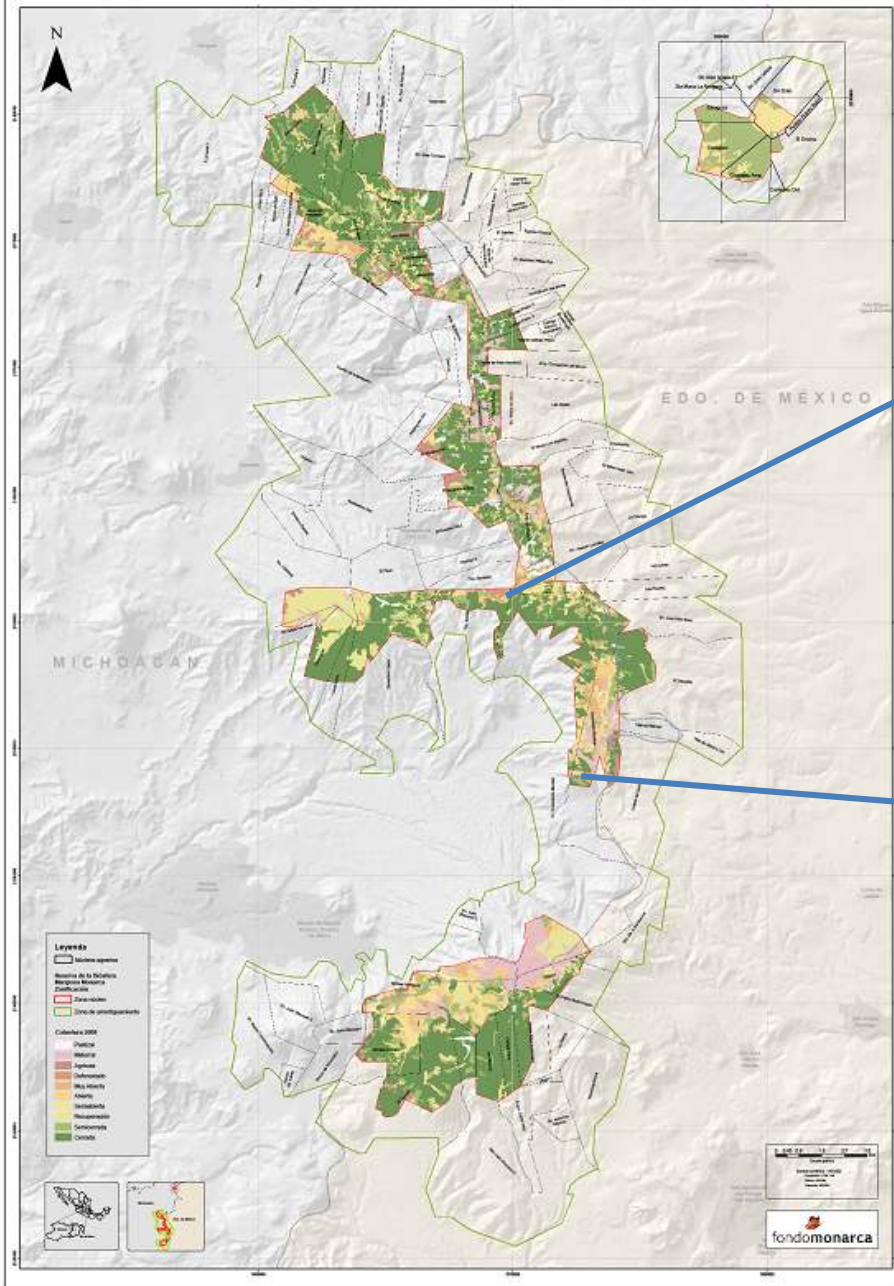
Cuadro 1. Classification of forest cover for the analysis of change in the core zone of the Reserve of the Monarch Butterfly Biosphere

1	Closed	> 80%
2	Semi - closed	55-79%
3	Semi - open	30-54%
4	Open	5-29%
5	Very open	< 5%
6	Deforested	0%
7	No forest	
8	Recovery	

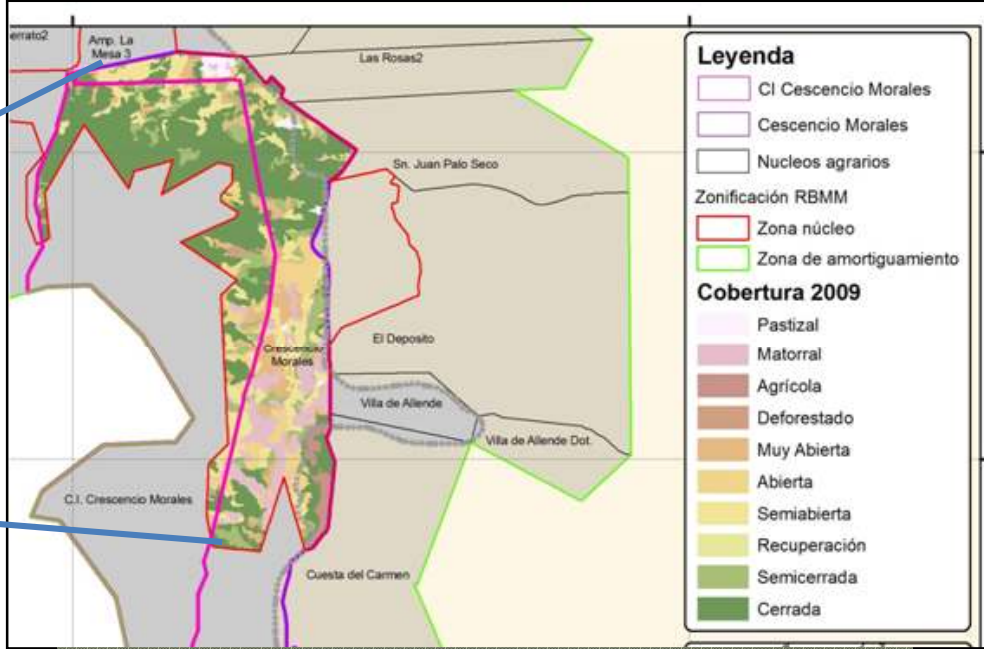
Matching Funds



RESERVA DE LA BIÓSFERA MARIPOSA MONARCA  
LÍNEA FORESTAL 2009



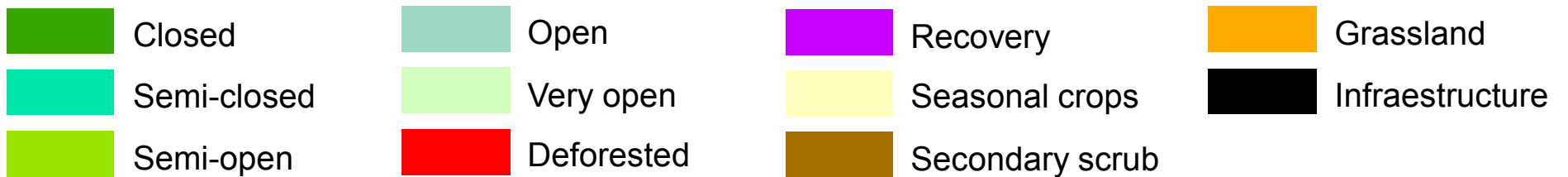
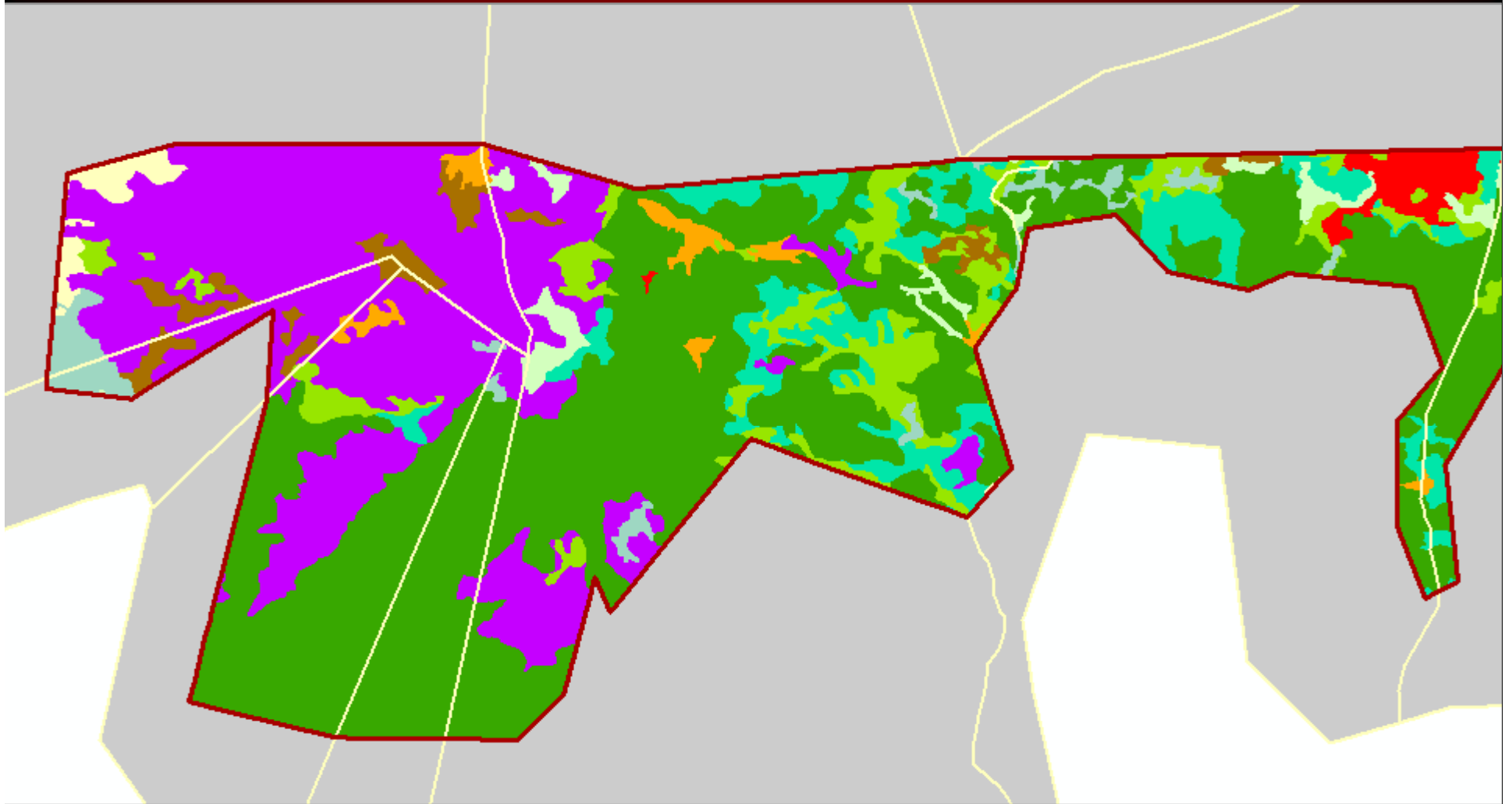
Forest cover in the core area,  
2009



Indigenous Community of Crescencio  
Morales

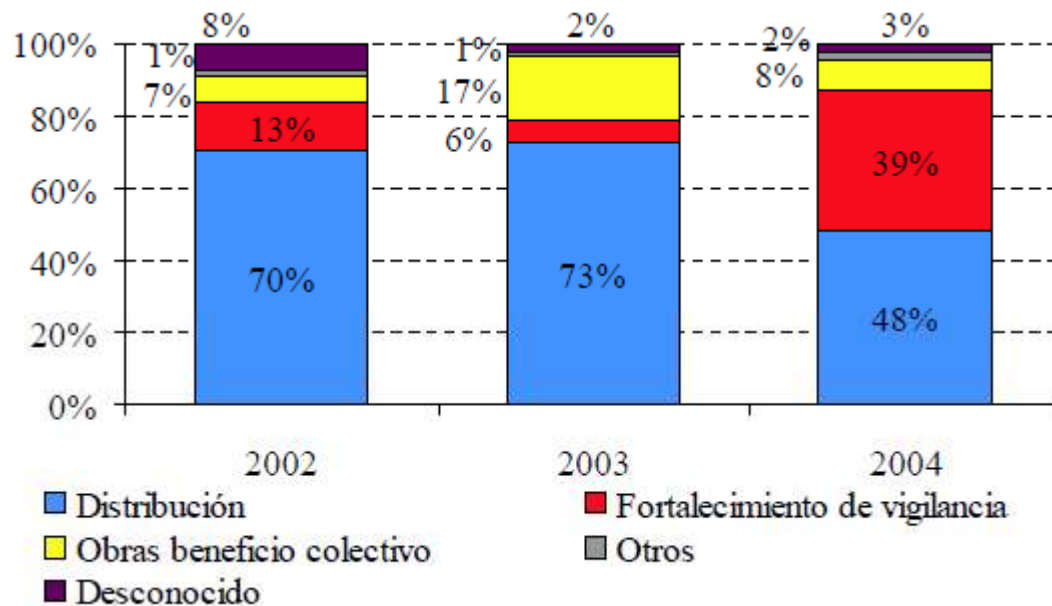
# Cover Forest 2003

## Changes in the forest are recovery



## 5. Features and strengths of the project

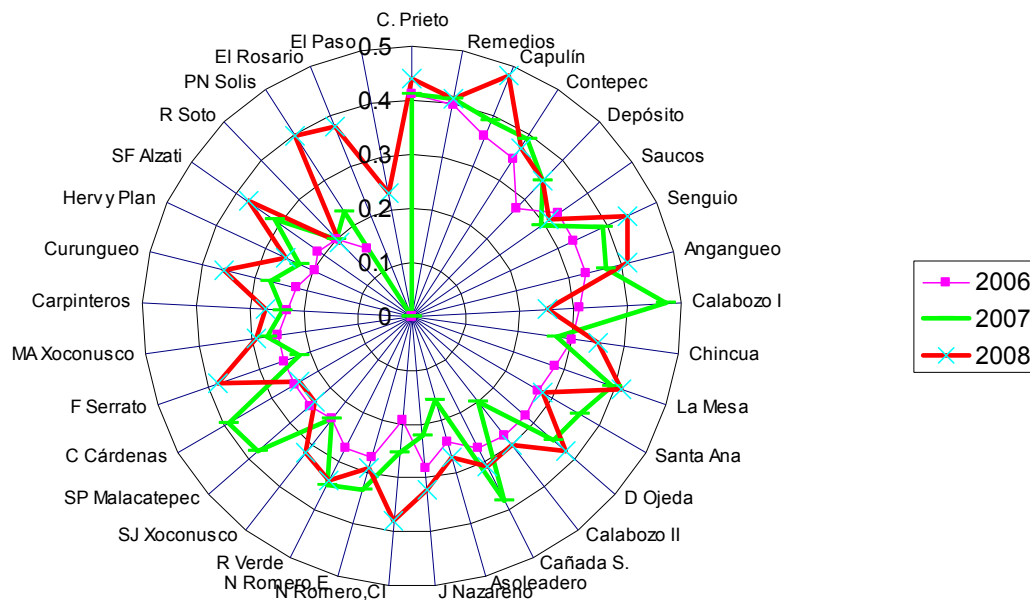
Work in conjunction with the managing entity of the Monarch Butterfly Biosphere Reserve and other institutions to ensure its protection.



Distribution of Monarch Fund resources 2002-2004 (Reyes y Contreras, 2005).



## MONITOREO SOCIAL - DESEMPEÑO 2006 - 2008 CUATRO INDICADORES



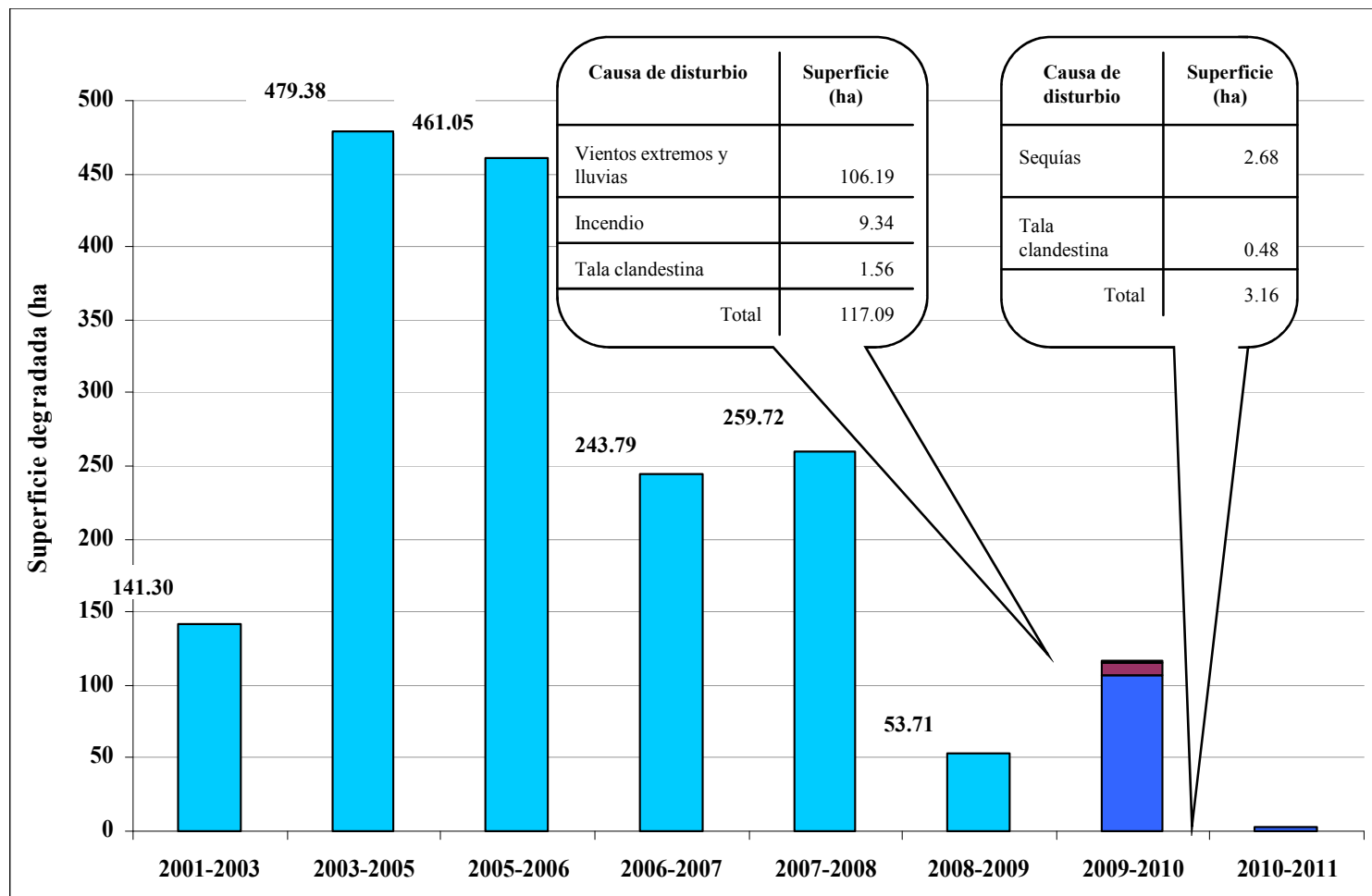
Incorporate water monitoring to perceive the relationship of payments for environmental services, forest conservation and contribution to the quality, quantity and availability of water Global Water Watch



## Global Water Watch



Forest monitoring conducted by the Monarch Fund in 2010 showed a significant reduction in deforestation in the core area, thus ensuring the survival of several species and the maintenance of processes such as aquifer recharge in the upper parts of the *Cutzamala* watershed—another important site for Monarch butterfly hibernation.



## Conclusions

- The Monarch Fund mechanism has been replicated on a national level due to its well defined and transparent financial design.
- National and sub-national benefit sharing mechanisms have been effective at performance based payments in the Monarch Fund and National Forest Fund coordination
- CONAFOR, Monarch Fund and the forest owners are signing contracts of different periods from one to ten years long and some times permanent agreements are signed, including matching funds among private, public and international funds.
- National, state and local implementation is guided by a multisectoral technical committee that involves six “ejidos” and indigenous Community.
- Performance based payments is a basic principle. Community MRV is a useful approach to assure performance based payments.
- Yes, we are convinced that national and subnational financing mechanism can effectively coordinate for good...

# Contact

**Eligio García Serrano  
Monarch Fund Coordinator**

**Héroes Ferrocarrileros No. 1  
Col. Héroes Ferrocarrileros  
Zitácuaro, Michoacán, México  
C.P 61506**

**Tel. y Fax. (715) 153 62 79**

**[fondomonarca2000@yahoo.com.mx](mailto:fondomonarca2000@yahoo.com.mx)**